

Austerity and health status

Decline:

Greece as a paradigm

The way to the crisis

Economical causes

2001

Introduction of Euro currency
Fastest growing economy in Eurozone
Olympic games
Greece continues borrowing

2007

Global economic crisis-Tourism and shipping hit, decrease of GDP

2009

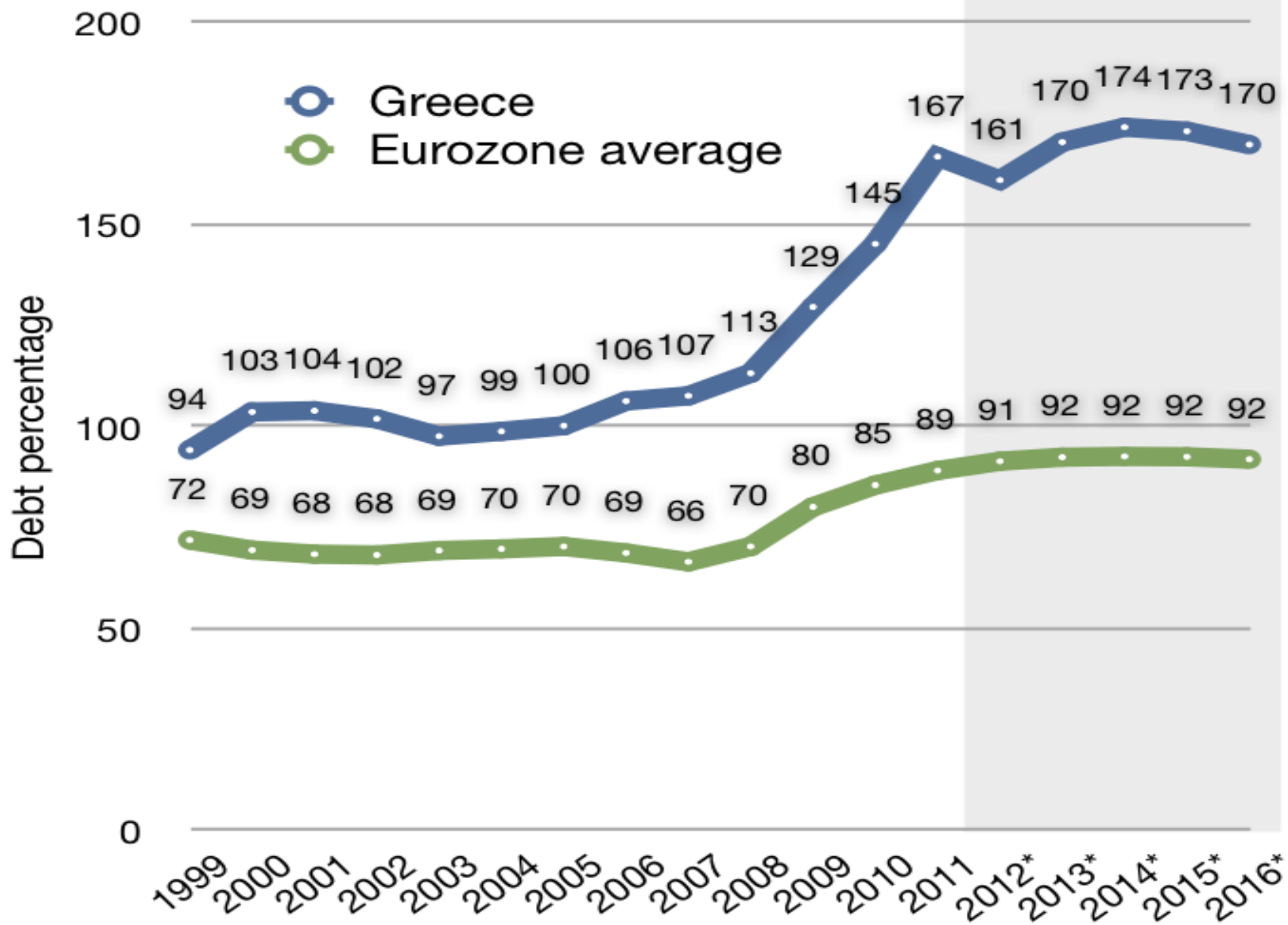
Deficit: 15,4% GDP
Debt: 126% GDP

2012

No access to private capital
Official beginning of the crisis



Greek debt in comparison to Eurozone average



The way to the crisis

Political causes

- Hierarchical and centralized structures are sustained
- Corruption
- Nepotism

Timeline of the crisis 2009-2012

- 3 consecutive governments

- 2 bailout packages

- 5 austerity packages

Structural Reforms

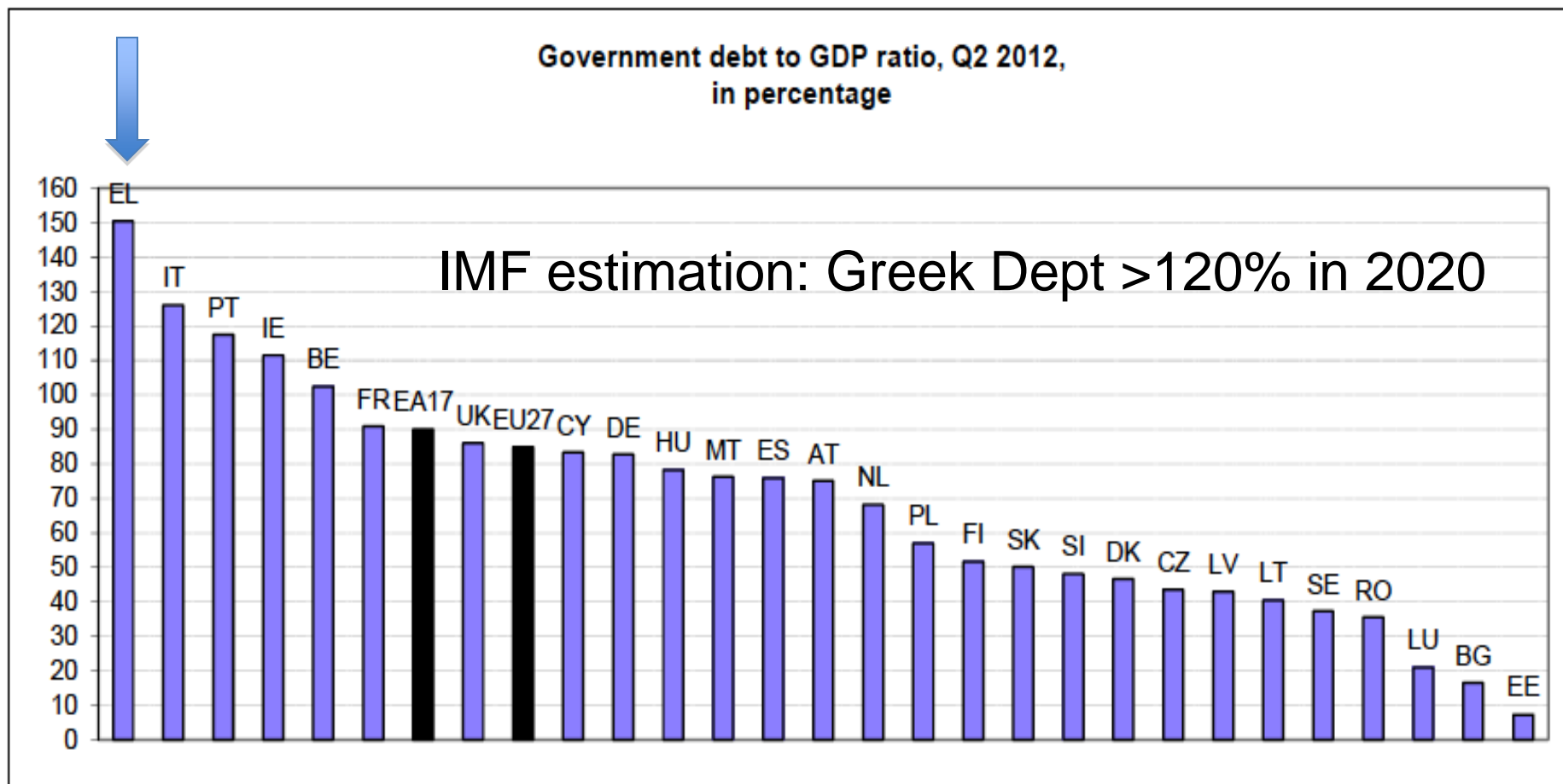
- Decrease of public spending
- Privatization of all public assets
- Labor market reforms
- Deregulation of the prices of goods
- Increase of Taxes
- Introduction of “solidarity tax”

Criticism of the Structural Reforms

- The reforms represent the biggest change of reforms within a generation
- Violation of the Greek Constitution
- Violation of human rights

Government debt at the end of the second quarter 2012 by Member State

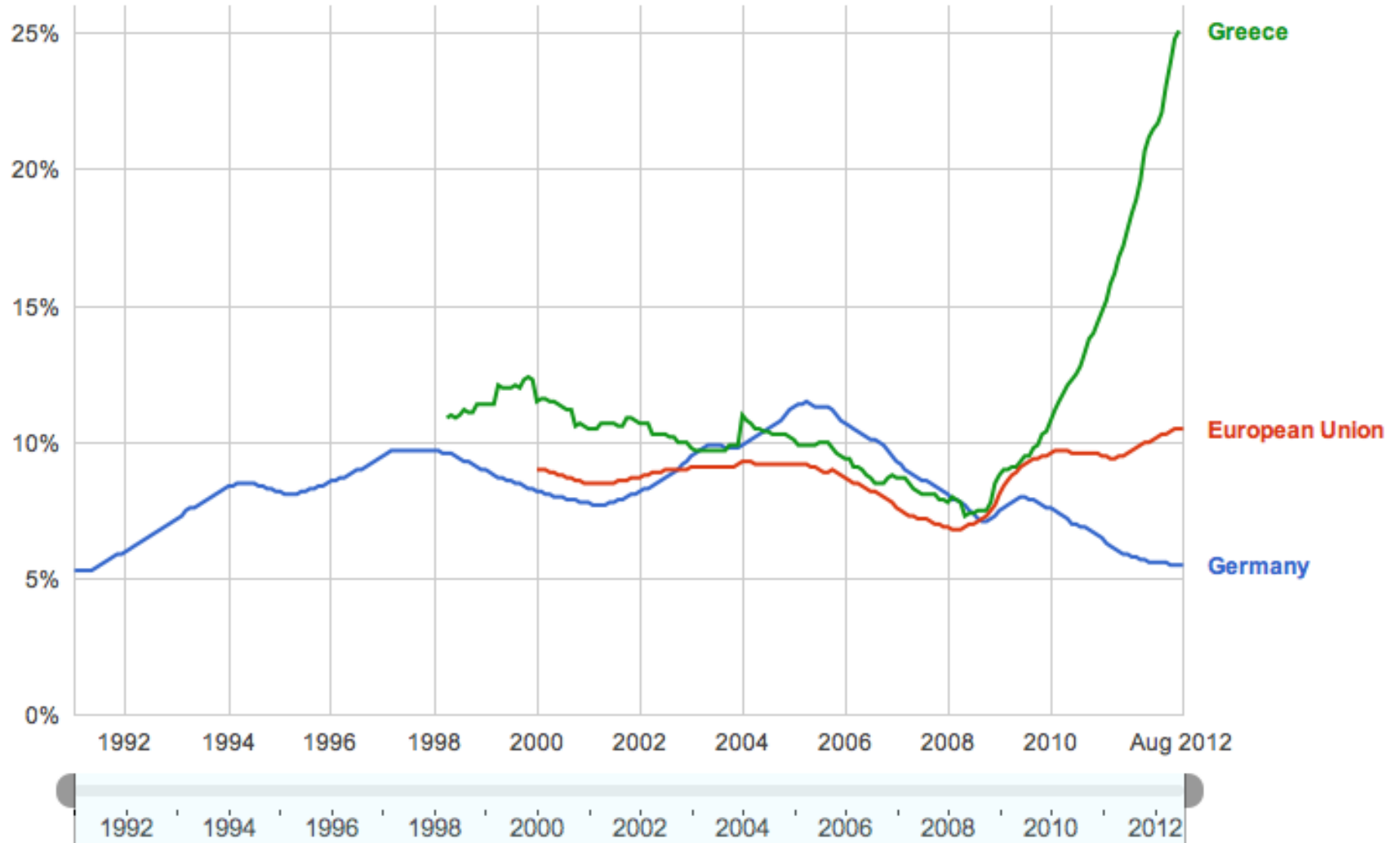
The highest ratios of government debt to GDP at the end of the second quarter of 2012 were recorded in **Greece** (150.3%), **Italy** (126.1%), **Portugal** (117.5%) and **Ireland** (111.5%), and the lowest in **Estonia** (7.3%), **Bulgaria** (16.5%) and **Luxembourg** (20.9%).



Social impacts of Structural Reforms

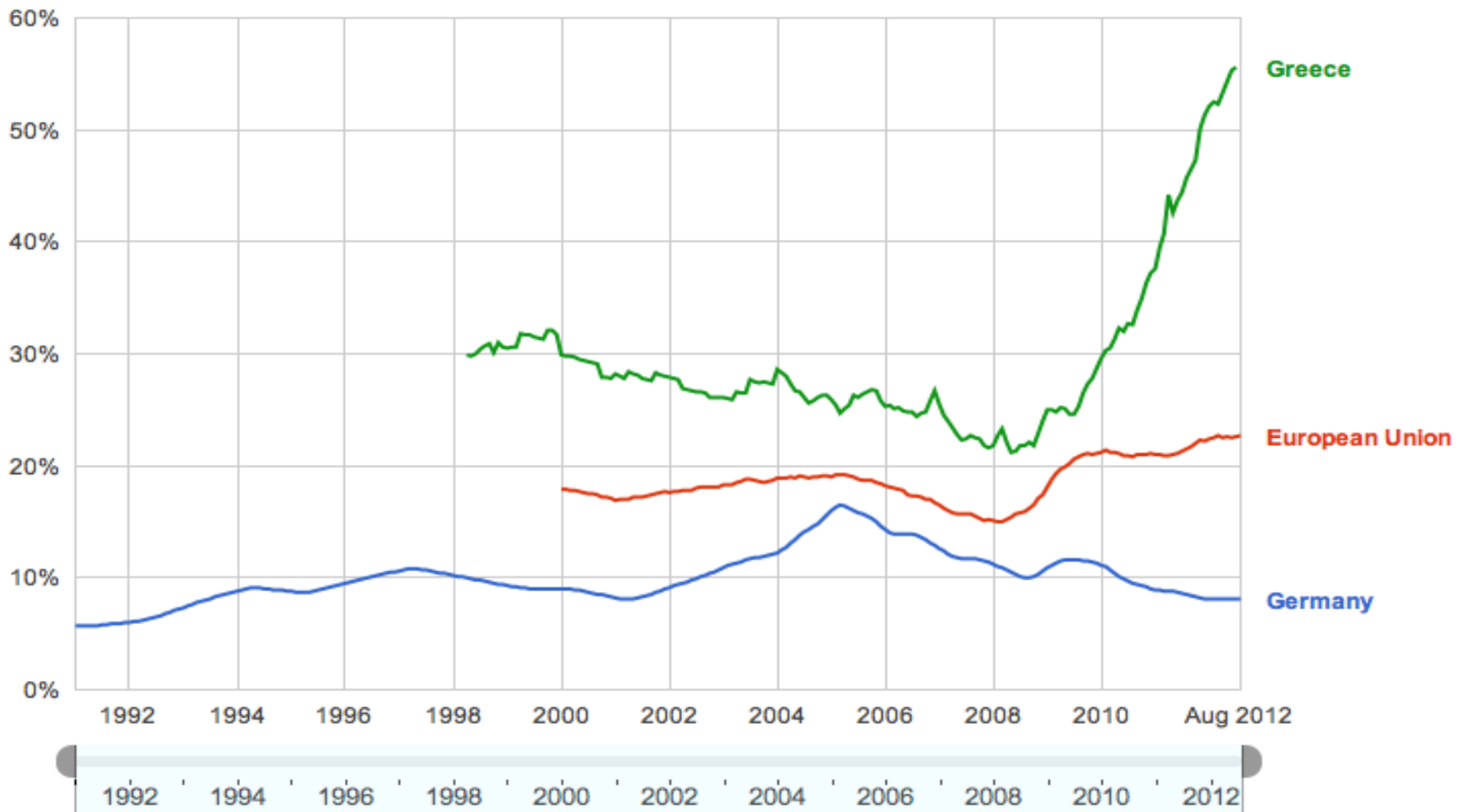
- **Unemployment rate: 25%**
- **Youth unemployment rate: 55%**
- **Risk of poverty or social exclusion: > 33%**
- **Children: 439.000 live below poverty level**
- **Homeless: increase by 25%**
- **Food shortage: 1 in 11 residents of Athens visit a soup kitchen daily**
- **Increase of uninsured (employed, unemployed, pensioners, refugees, immigrants)**

Unemployment rate



Data from [Eurostat](#) Last updated: Oct 24, 2012

Youth unemployment rate



Social impacts of Structural Reforms

- **Unemployment rate: 25%**
- **Youth unemployment rate: 55%**
- **Risk of poverty or social exclusion: > 33%**
- **Children: 439.000 live below poverty level**
- **Homeless: increase by 25%**
- **Food shortage: 1 in 11 residents of Athens visit a soup kitchen daily**
- **Increase of uninsured (employed, unemployed, pensioners, refugees, immigrants)**

Austerity health-related interventions

- Health-related measures :
 - health expenditure: from 9,5 to 5.8 % of GDP
 - 37% ↓ of hospitals total number
 - cuts in personell and salaries (min 30%)
 - introduction of fees for use of emergencies
 - introduction of fees for medical coverage in chronic diseases

Health decline

- General consequences :
 - shortages in basic hospital supplies
 - no drug dispensing on credit
 - no adequate vaccination coverage
 - epidemiological screening and surveillance ↓

Health decline

Measurable consequences I:

- Data extreme scarce:
 - crisis is still quite recent
 - no monitoring of health status by key policymakers
 - no updated data by national or international institutions

Follow up meeting to the Oslo Ministerial Meeting “Health in times of global economic crisis: the situation in the WHO European Region” in **04/13**

Health decline

- Measurable consequences II:
 - self-reported health status ↓
 - suicide epidemic (↑ 40% within one year)
 - 20%↑ of heroin-IDUs
 - 1500% ↑ of HIV-newinfections (IDUs), ↑90% STDs
 - Reappearance of endemic malaria

Kentikelenis A, *Lancet* 2011; Barr B, *BMJ* 2012; Paraskevis D, *Euro Surveill* 2011, Greek monitoring center for drugs 2011

Health decline

- Measurable consequences II:
 - 70% of refugees are victims of racist and police violence
 - 30%-50% of people seeking health care in NGOs are natives
 - 24%↑ in admissions in public hospitals from 2009 to 2010





**AMNESTY
INTERNATIONAL**



Health decline

- Measurable consequences II:
 - 70% of refugees are victims of racist and police violence
 - 30%-50% of people seeking health care in NGOs are natives
 - 24%↑ in admissions in public hospitals from 2009 to 2010

Reaction I

- No proper reaction by policymakers neither on national nor on european level!
 - Ministry of health denounces HIV pos. sex workers by prosecution and publishing personal data
 - Eu-Comission is still
 - WHO official statement still pending

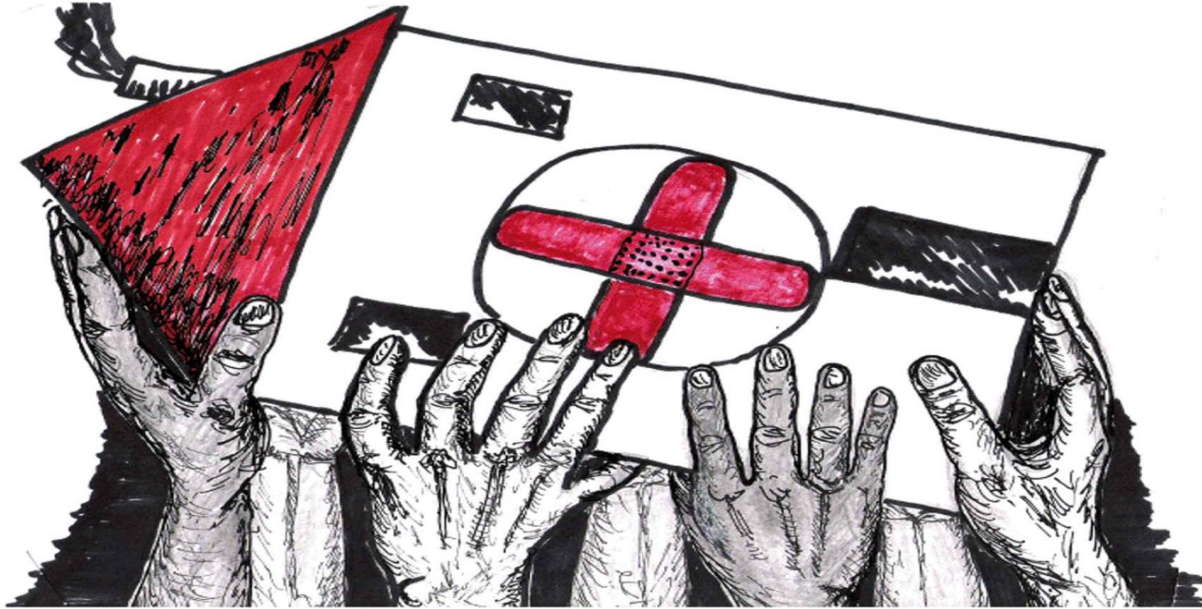
While official health system is collapsing!

Reaction II

NGOs, grassroot initiatives, self-organized, medical centers are the only health institutions trying to cope with the collapse!

- 30% of the total population is attending these institutions for basic health provision

Ενάντια σε ένα σύστημα
που εξαθλιώνει τη ζωή
Στηρίζομαστε!
Στηρίζουμε την Αλληλεγγύη!



εκδήλωση - συζήτηση για
το υπό κατεδάφιση Δημόσιο Σύστημα Υγείας
&

το **Κοινωνικό Ιατρείο Αλληλεγγύης,**
τη δημιουργία, τη δράση, τους στόχους του

κιν/γράφος "Αλέξανδρος", Εθν. Αμύνης 1
Κυριακή 12/02/12, στις 11:00 π.μ.

Perspectives

- Further recession at least for 2013 (already cum. 25% recession)
- Debt of 120% of GDP in 2020-optimistic scenario
- Massive brain drain of health professionals
- On daily basis growing number of uninsured (20% of tot. pop. now!), homeless, marginalized
- Luring HIV-epidemic, appearance of famine, poor vaccination coverage

Perspectives

Emerging humanitarian crisis

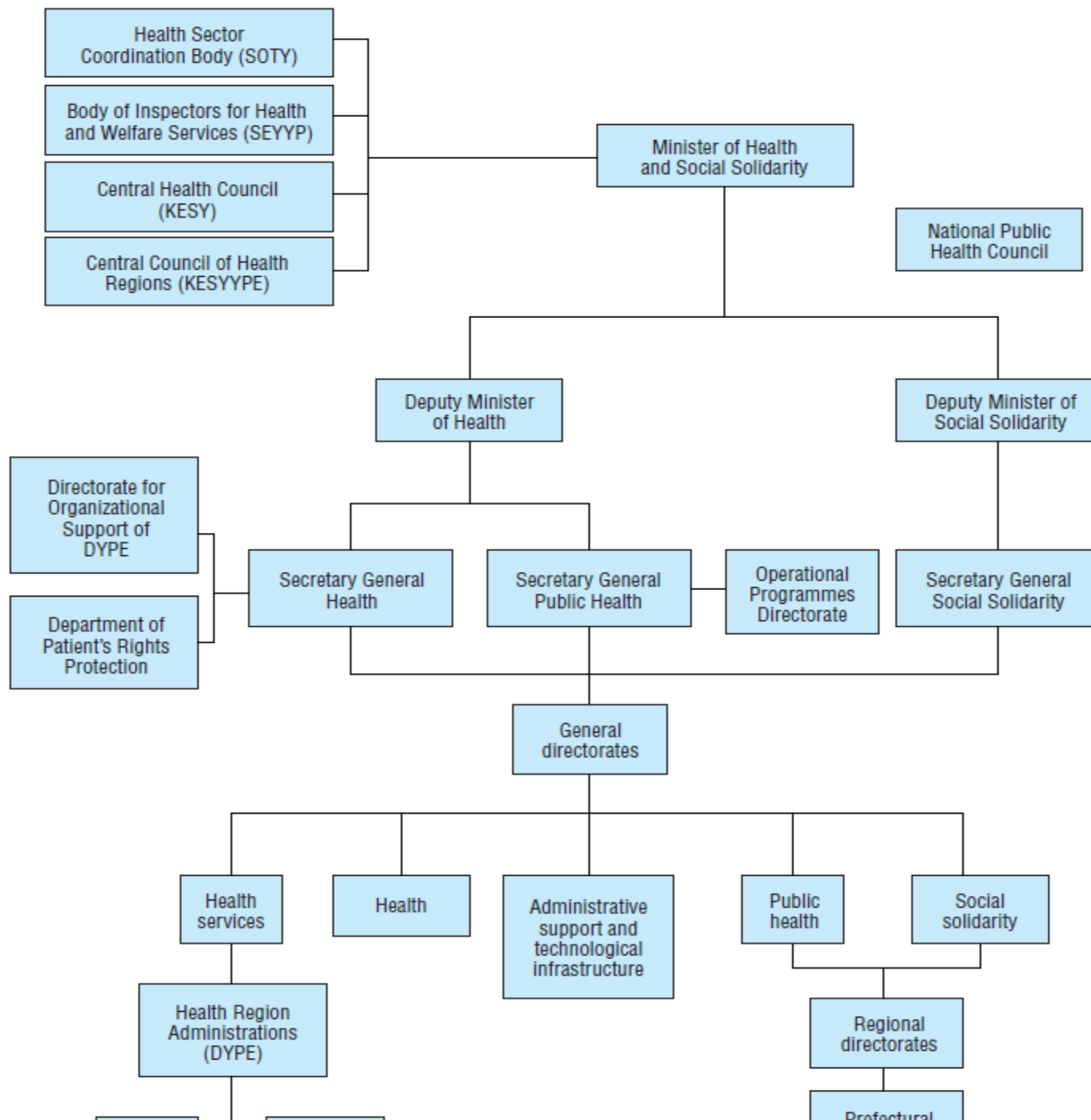




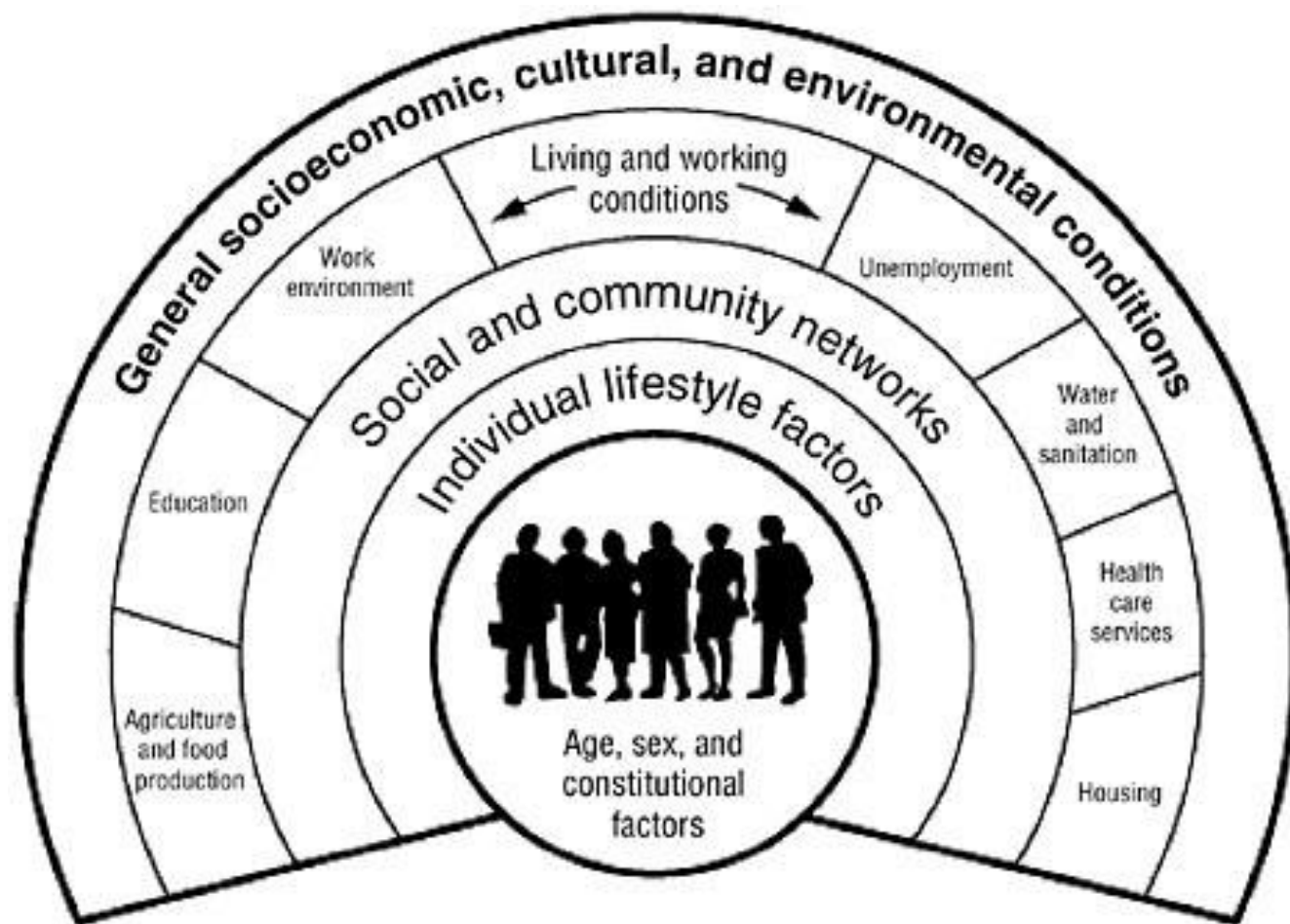
Perspectives

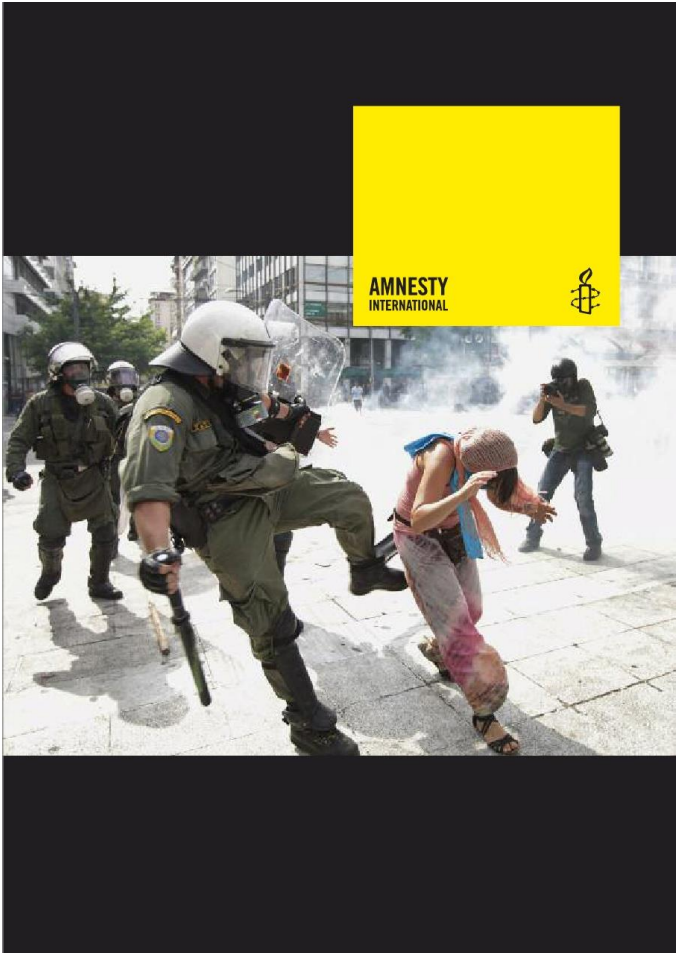
**Emerging humanitarian crisis is
inevitable**

*Unless radical reorientation on central political
level occurs !*



- **Suicides associated with the 2008-10 economic recession in England: time trend analysis (McKee 2012)**





AMNESTY
INTERNATIONAL







Social impacts of the Structural Reforms

Deterioration of almost every known social determinat of health!!

Austerity-health related interventions

- Health related measures :
 - health expenditure ↓ (9,5% of GDP to 5,8% in 2 years!)
 - 37% ↓ of hospitals total number
 - cuts in personell and salary (min. 30%)
 - introduction of fees for use of emergencies

Health intervention

-Insurance:

-↑ retired age to from 65 to 67

-

Greek health system-short overview

- Public- ESY
- Security social funds-EOPYY-nowadays done by troika
- private

Health decline

- General consequences :
 - shortages in basic hospital supplies
 - no adequate vaccination coverage
 - no drug dispensing on credit
 - epidemiological screening and surveillance ↓
 - uninsured, refugees and immigrants with limited or no access to health care

Health decline

- Measurable consequences:
 - self-reported health status ↓
 - suicide epidemic (↑ 40%)
 - 1500% ↑ of HIV-newinfections (IDUs),
 - ↑90% STDs
 - Reappearance of endemic malaria
 - 70% of refugees are victims of violent acts
 - 30%-50% of people seeking health care in NGOs are natives

Reaction

- No proper reaction by policymakers neither on national nor on european level!

Reaction

NGOs, grassroot initiatives, self-organized, medical centers are the only health institutions trying to react !

Perspectives

- Further recession at least for 2013 (already cum. 25% recession)
- Debt of 120% in 2020-optimistic scenario
- Massive brain draing of doctors and health personell
- On daily basis growing number of uninsured, homeless, marginalized
- Luring HIV-epidemic, appearance of famine, poor vaccination coverage

Perspectives

Humanitarian crisis

Unless radical reorientation on central political level occurs

Fig. 2.2

Organization of the Ministry of Health and Social Solidarity

